

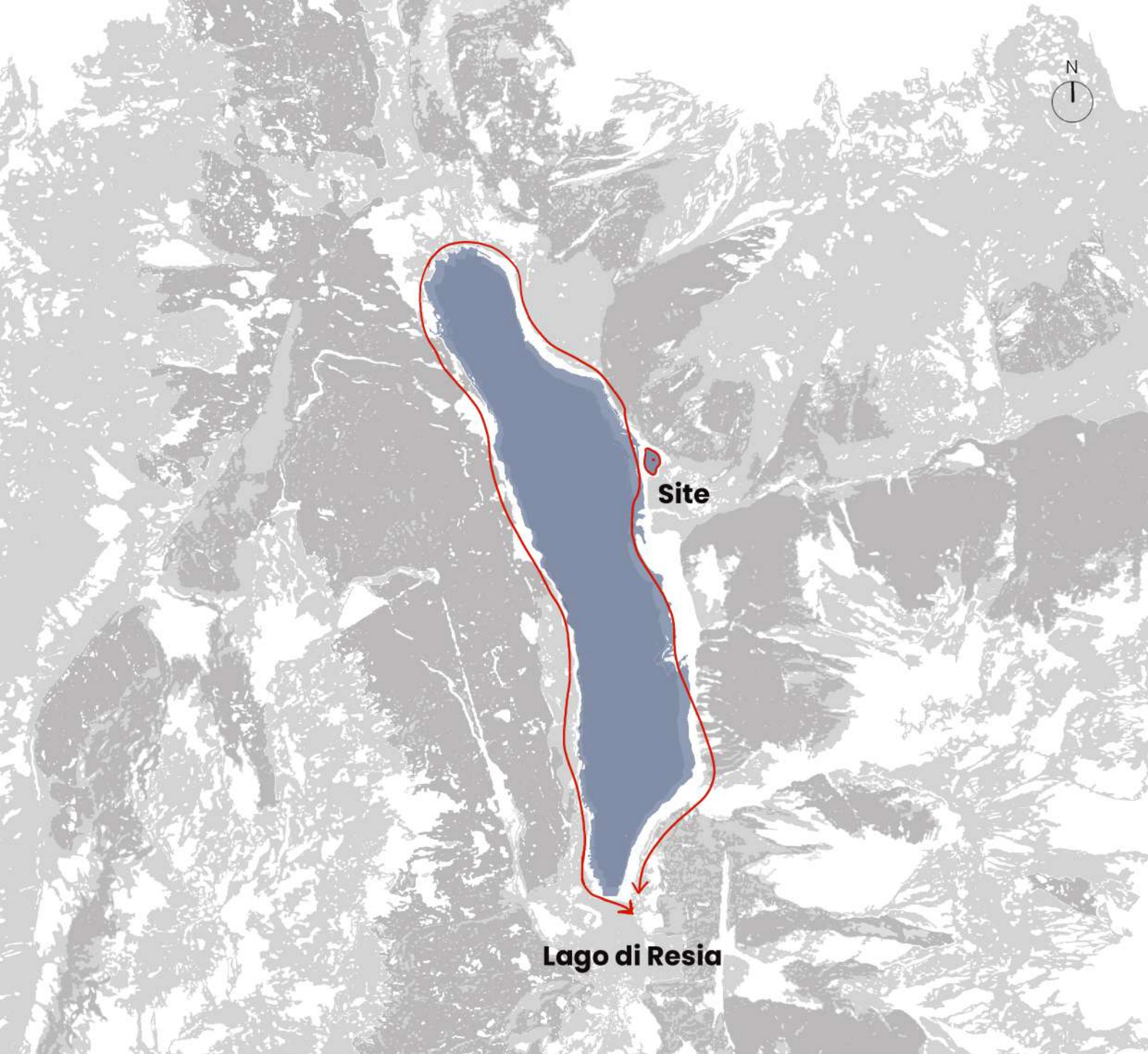
THE BELL TOWER



THE BELL TOWER

The village of Curon in northern Italy was submerged in 1950 when a dam was built to create Lake Resia for hydroelectric power. Over 160 homes were flooded, displacing villagers, despite protests. The only visible remnant of the old village is the 14th-century bell tower, which now stands partially submerged in the lake and has become a symbol of the lost community.

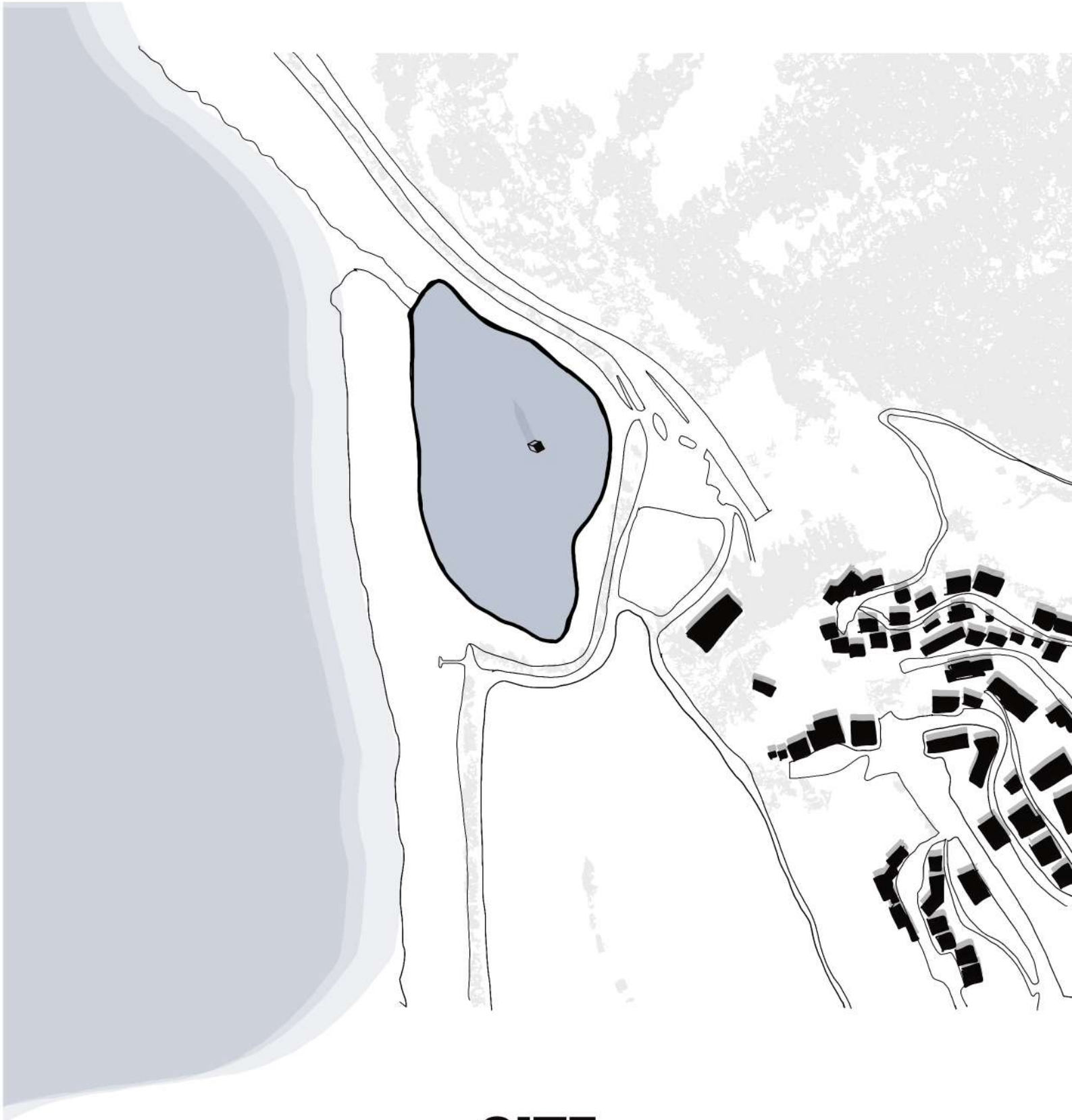
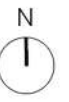
Locals moved to a new village nearby, and the site is now a popular tourist attraction. Curon's story, marked by loss and resilience, has also inspired folklore and media.



Context

Lake Resia (Lago di Resia) is an artificial lake in northern Italy, created in 1950 by merging two smaller lakes to build a dam for hydroelectric power. The project flooded the village of Curon, displacing hundreds of residents and submerging homes and farmland.

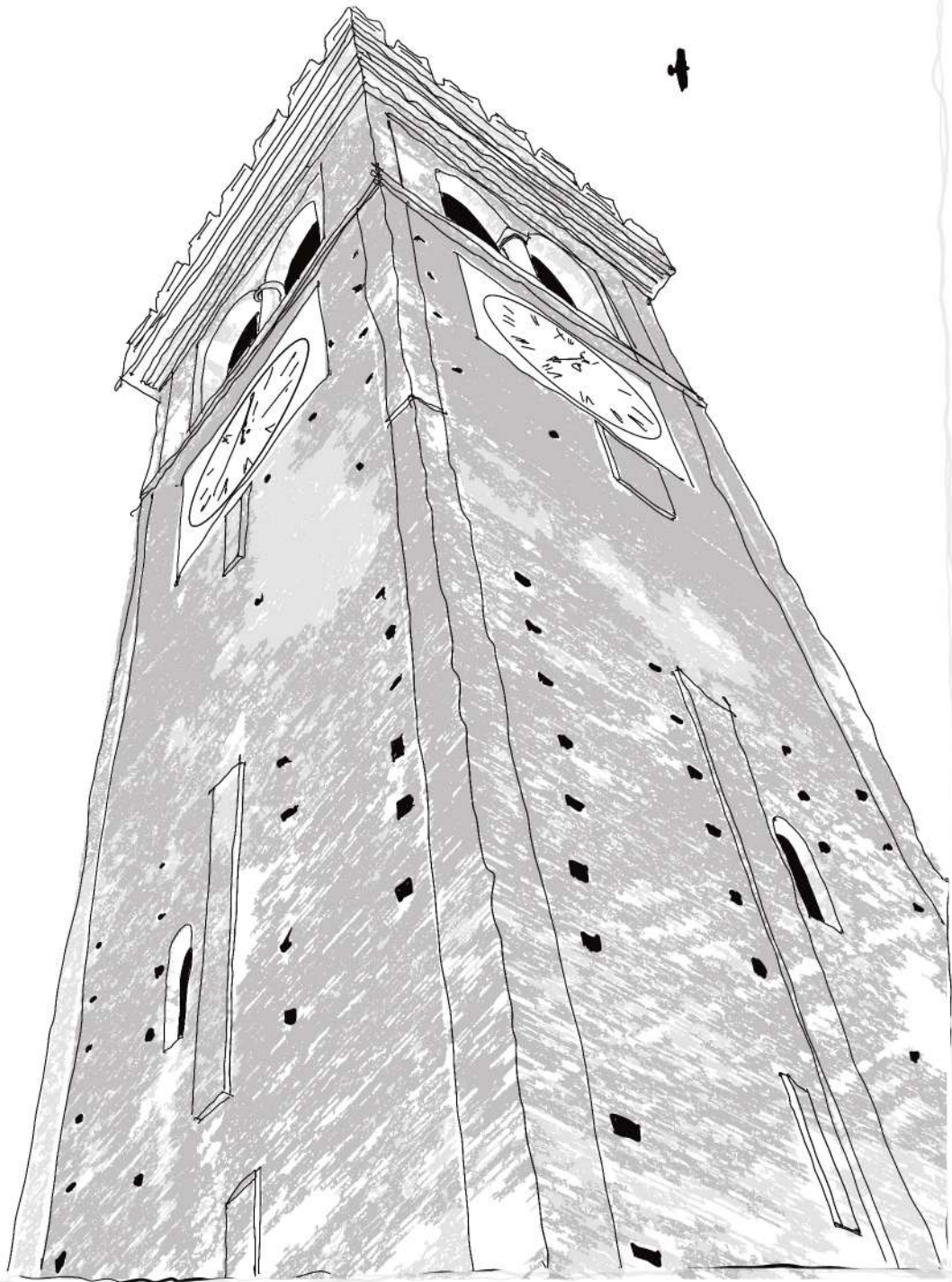
The most iconic feature of the lake is the 14th-century bell tower of the old village, which remains partially above water and has become a symbol of the region's history. The lake is now a popular destination for tourists, offering scenic views and activities like hiking and winter sports.



SITE

Coordinates

46.810729400472695, 10.536570374502556



Restaurant | Bar

Key Words

- Floating
- Addition
- History
- Innovation
- Sustainable Design



Project Requirements

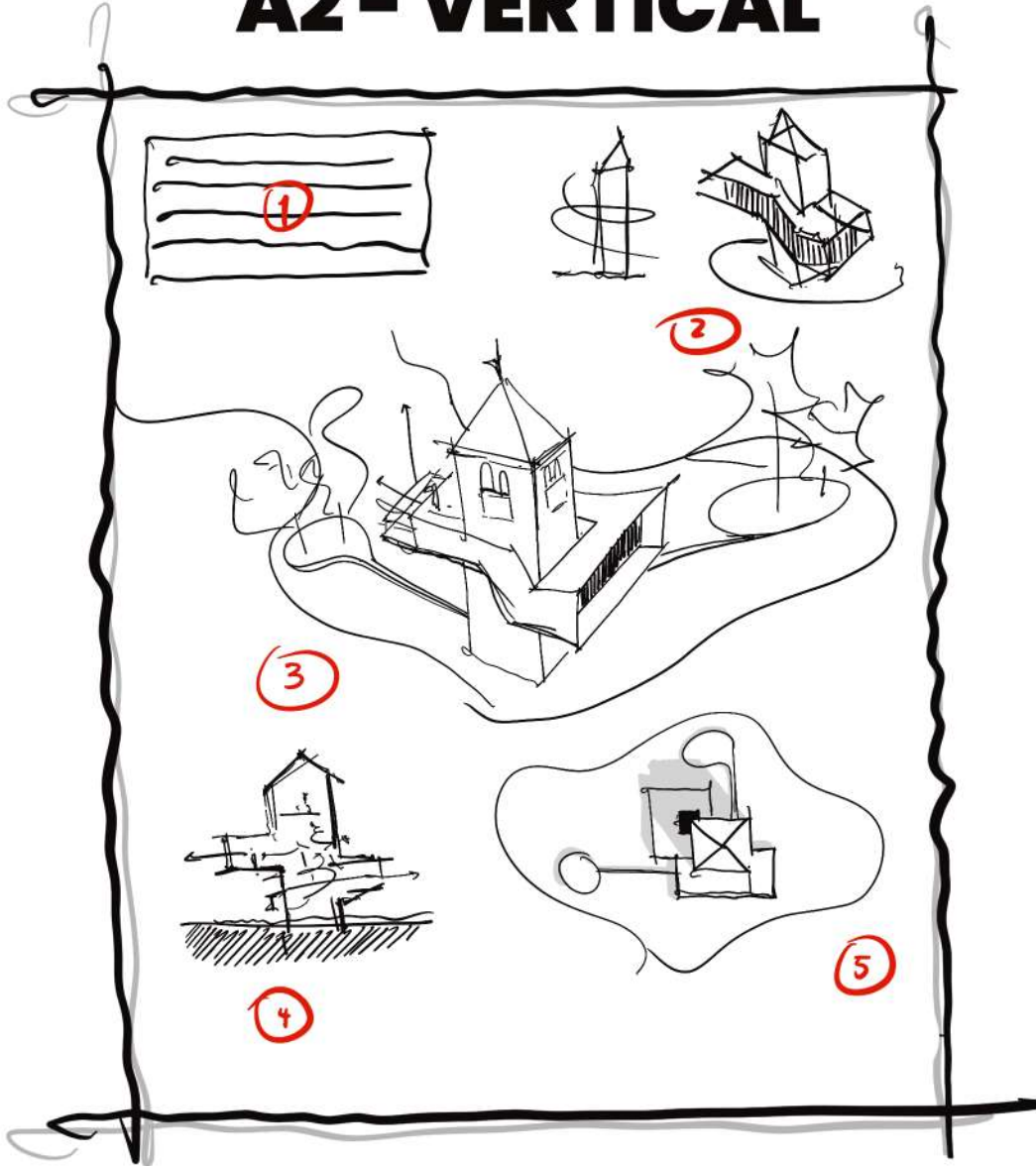
We challenge you to design a sustainable restaurant/bar that creatively integrates with the iconic bell tower at Lake Resia. You have complete freedom to either:

- Add onto the tower itself, perhaps with extensions or structures that complement its history and architecture.
- Or propose a floating element that interacts with the water around the tower, creating a unique experience for guests while respecting the environment.

Be bold and innovative—think about using eco-friendly materials, renewable energy, and clever design solutions that blend with the tower's history and the stunning natural setting. We encourage you to reimagine how a restaurant/bar can exist in harmony with this extraordinary site!

We look forward to your visionary concepts!

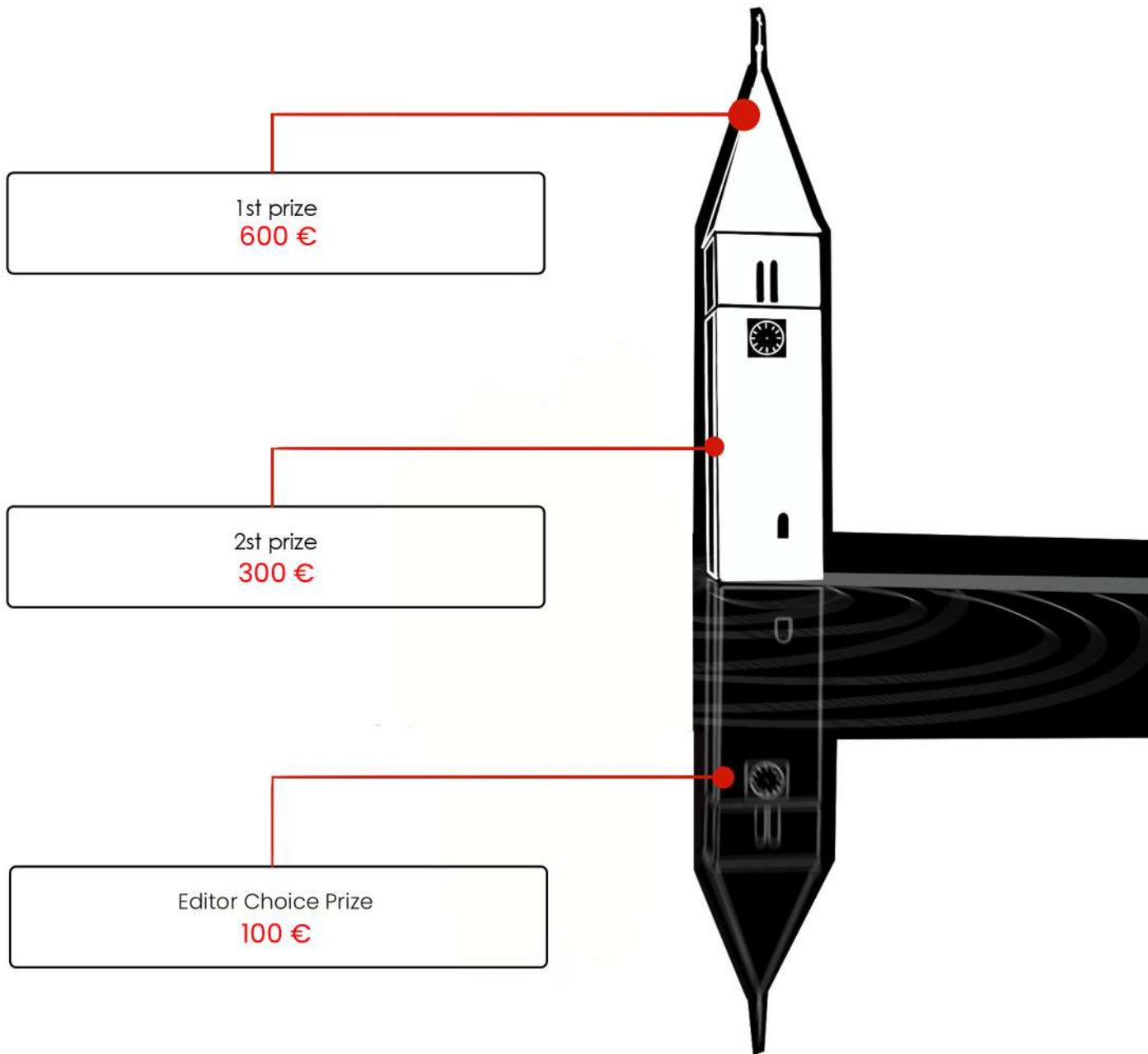
A2 - VERTICAL



It's **IMPORTANT** to note that the template provided is purely for **EXAMPLE** purposes. While it serves as a helpful guide, feel free to adapt and customize it to better suit your specific needs.

SUBMISSION REQUIERMENTS

1. CONCEPT
2. CONCEPTUAL DIAGRAMS
3. PERSPECTIVE/RENDER
4. SECTION
5. SITE PLAN /
GROUND FLOOR



TIMELINE & PRIZES

